

Sewer Vent

Refer to product table below for applicable product codes covered by this document

Issue **A, 11/2023**

Product Type & Application

The Bradford Ventilation Sewer Vent is a wind driven natural ventilator that is designed to exhaust heat and moisture from the sewer tank, without the use of electrical energy. It is made of UV resistant engineering polymers with two high-quality stainless-steel bearings and an aluminium shaft to withstand the impact of harsh air streams from sewers, pits, and drains.

Compliance with the New Zealand Building Code

When correctly specified and installed, this product meets or contributes to compliance with the following performance requirements of the building code:

- **B2 Durability** B2.3.1(c) – The materials of construction of the Bradford Ventilation Sewer Vent has a well-established history of use in service.
- **F2 Hazardous building materials** - F2.3.1 - The materials of construction of the Bradford Ventilation Sewer Vent do not emit or give rise to harmful concentrations of gas, liquid, radiation or solid particles.
- **G13 Foul Water** – G13.3.4 (g) (contributes to) - The Bradford Ventilation Sewer Vent contributes to systems for the efficient and effective storage, treatment and on-site disposal of foul water.

Basis of Compliance

- Acceptable Solutions and Verification Methods for New Zealand Building Code Clause B2 Durability Second edition (Amendment 12), 28 November 2019.
- Acceptable Solutions and Verification Methods For New Zealand Building Code Clause G13 Foul Water Second edition (Amendment 10), 2 November 2023.

Limitations of Use

- **IMPORTANT:** Do Not Modify This Product: Compliance with the evidence of suitability data referenced in this document is only achieved by the product or configuration listed in this PTS.
- Do not use for exhausting hazardous, abrasive, explosive materials or alkaline vapour.
- This product has not been tested for use in cyclonic wind regions.
- This product is not subject to any warning or ban declared by MBIE under section 26 of the Building Act 2004.
- Seek technical advice from Bradford Ventilation on application suitability if unsure.

Specific Design or Installation Instructions

- Isolate power before installation.
- This product must be installed in a dry location and sealed against water ingress.
- The product is designed to fit directly onto a 150mm PVC pipe and can be adapted to fit 100mm pipe with a reducer assembly.
- Assembly and installation must be accordance with the product installation manual.
- The rotating head of this product must be installed horizontally to ensure correct operation.

For general installation guidance refer to the product installation guide at www.bradfordventilation.com.au

Conditions of Storage, Use & Maintenance

- Store in the original packaging in a cool and dry area.
- Do not attempt to repair – contact Bradford Ventilation for service advice.
- This product requires regular checking for wear/tear.

Refer to the product warranty at bradfordventilation.com.au for more information.

Sewer Vent

Applicable Product Codes (SKU)

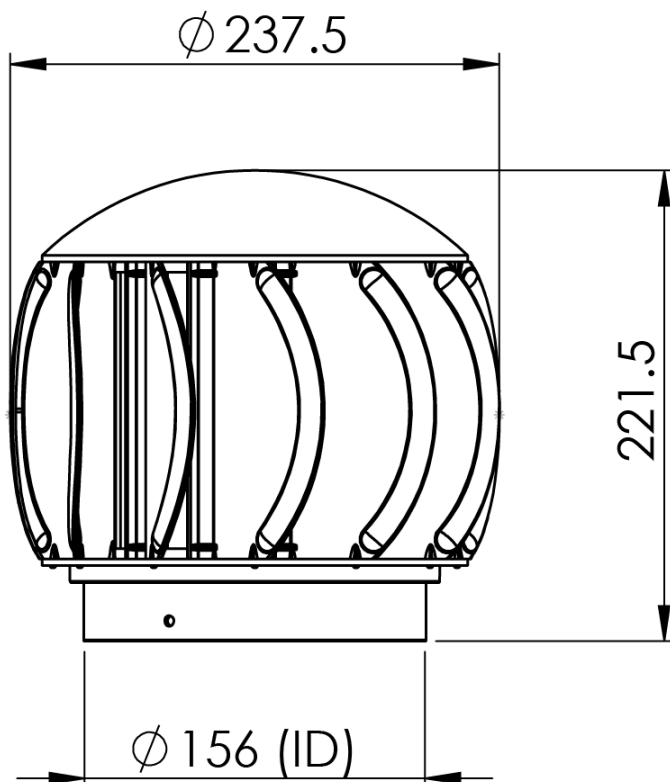
Colour	Material Code
Sewer Vent - White	61374
Sewer Vent - Black	96951

Product Specifications

General	
Ventilator Type	Sewer Turbine Ventilator
Turbine Diameter	237.5 mm
Throat Diameter	156.0 mm
Product Weight	1.20 kg

Material	
Turbine	ASA Plastic
Shaft	Aluminium
Rotation Bearings	Twin Ball Bearings

Product Dimensions (in mm)



Bradford NZ, 14 The Furlong, Takanini, Auckland For further technical advice call 0800 277 123/ visit bradfordinsulation.co.nz/ email bradford@csr.co.nz

Bradford NZ is a business division of CSR Building Products (NZ) Limited (NZBN 9429040750194)

CSR Bradford is a business division of CSR Building Products Limited (ABN 55 008 831 356). Manufactured by CSR Building Products Limited.

The contents of this brochure are copyright protected and may not be reproduced in any form without prior written consent of CSR Bradford. Recommendations and advice regarding the use of the products described in this brochure are to be taken as a guide only, and are given without liability on the part of the company or its employees. We reserve the right to change product specifications without prior notification. Please refer to the CSR Bradford website for the latest revision of this document. The purchaser should independently determine the suitability of the product for the intended use and application.

