

E-Duct Ventilator

Refer to product table below for applicable product codes covered by this document

Issue **B**

Product Type & Application

Bradford Ventilation E-Duct (Exhaust Duct) is designed to allow the ventilation of sewer systems or water treatment tanks. The ventilator is designed for use in conjunction with Bradford Ventilation I-Duct (Inlet Duct) to provide replacement air.

Compliance with the NCC

There are no relevant clauses within the NCC for this product to comply with.

Evidence of Suitability

There are no relevant clauses within the NCC to show compliance with – refer to the Additional Data section of this PTS for other compliance data.

Conditions of Storage, Use & Maintenance

- Store in the original packaging in a cool and dry area.
- Top load only – damage may be caused to ventilator by stacking other items on top of the packaging and/or ventilator.
- This product requires regular inspection and maintenance, which should be increased in frequency when used in harsh environments.
- Do not attempt to repair – contact Bradford Ventilation for service advice.

Refer to the product warranty at bradfordventilation.com.au for more information.

Limitations of Use

- **IMPORTANT** - Do Not Modify This Product: Performance and safety are only achieved by the product or configuration listed in this PTS
- Do not use for exhausting hazardous, abrasive, acidic and alkaline vapour or areas containing explosive or corrosive materials.
- This product is not suitable for use in Bush Fire BAL-12.5 to BAL-40 or BAL-FZ rated areas.
- This product has not been tested for use in cyclonic wind regions C or D.
- Products installed within 1,000m of breaking surf are recommended to be specified with (optional) polyolefin or powder coat finish for additional corrosion protection.
- Seek technical advice from Bradford Ventilation on application suitability if unsure.

Specific Design or Installation Instructions

- **Caution:** The turbine head of this product can rotate without warning (even during installation) – always keep body parts away from moving components.
- The rotating head of this product must be installed upright to ensure correct operation.
- Replacement outside air must be provided via evenly distributed openings or I-Duct positioned to facilitate crossflow ventilation and help the E-Duct to work more effectively and efficiently.
- This product may be used in moist or dusty applications in conjunction with a regular inspection and maintenance program.
- This product is suitable for installation onto suitable sized piping or tubing where a suitable seal can be achieved.

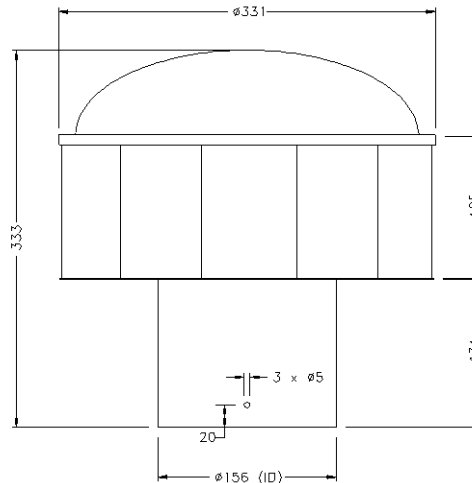
For general installation guidance refer to the product installation guide at www.bradfordventilation.com.au

E-Duct Ventilator

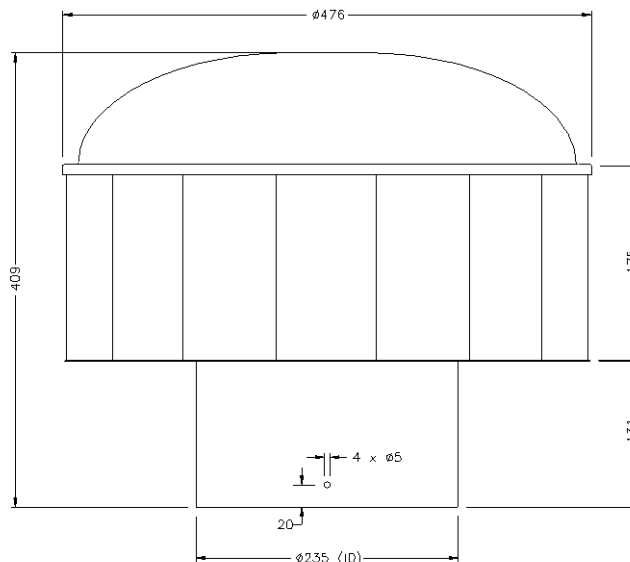
Applicable Product Codes (SKU)

Size	150mm	225mm	300mm
Code	88592	88593	61419
Weight	2.3 kg	4.3 kg	4.5 kg

Product Dimensions - 150mm

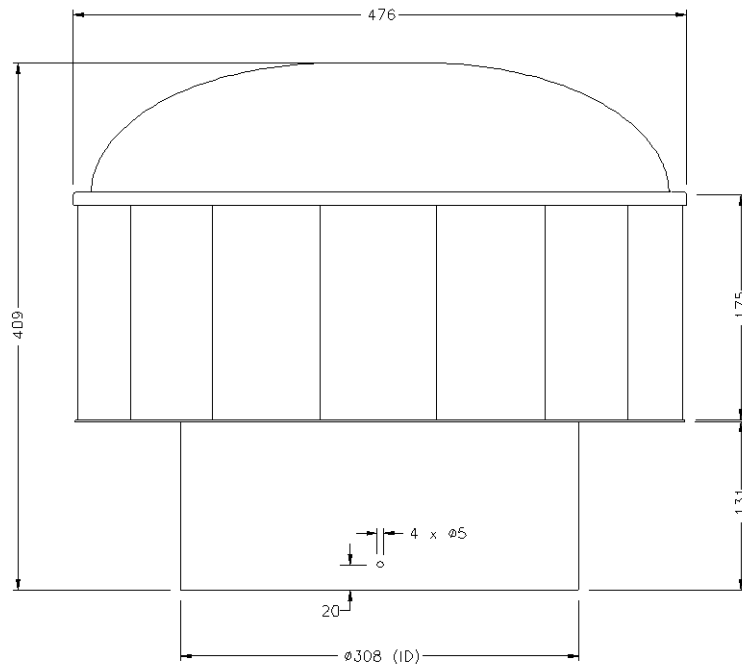


Product Dimensions - 225mm



E-Duct Ventilator

Product Dimensions - 300mm



Product Specification

Component	Material
Turbine	Aluminium
Dome	Aluminium
Bracket & Throat	Stainless Steel
Shaft	Stainless Steel
Bearing Holder	Nylon Glass Filled
Rivets and Screws	Stainless Steel
Finish	Powder Coat – Inside and outside